

### Overview

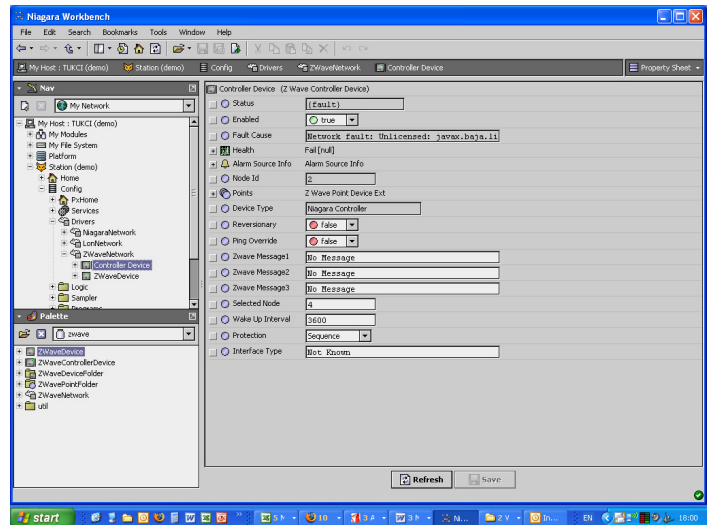
The Z-Wave driver for Niagara<sup>AX</sup> enables wireless Z-Wave devices to be managed by Niagara running on a JACE. Z-Wave is an internationally used open standard RF Mesh network, aimed primarily, but not exclusively, at the residential and small commercial buildings markets. Many companies already offer, or are currently developing Z-Wave compatible products. Already available devices include light switches, plug-in switching modules, temperature sensors and thermostats, PIR detectors, I/O modules, electricity meters and hand-held remote controls. Contact Tridium for details of suitable products and their sources. To communicate with the Z-Wave network an RF interface module must be connected to the JACE RS232 port. The advantage of an external RF unit is that it can be located for best signal strength, and outside any metal enclosure that the JACE may be housed in.

### Applications

A JACE 2 controller with Z-Wave driver enables rapid installation and commissioning of dimmable lighting control and home automation systems, and creates the opportunity to easily retrofit simple monitoring and control systems in small commercial buildings such as retail shops and banks. As an initial minimum, monitoring electricity consumption and temperature in all branches provides knowledge of occupancy and enables benchmarking of energy use and prioritisation of subsequent controls investments. The JACE can be remotely accessed via an existing intranet, or via a GPRS modem.

In Home Automation, the JACE provides a cost-effective solution with web-served user interface and remote connectivity.

## Z-Wave Driver DATA SHEET



### Features

- Standard feature in Niagara<sup>AX</sup> JACE
- Requires RS232 to Z-Wave interface
- Enables management of wireless device networks
- Ideal for retrofit applications and where speed and/or cost of installation is important
- Many Z-Wave device types becoming available

### System Requirements

Niagara AX 3.0 or later running on a JACE with a Z-Wave interface module connected via an RS232 serial port. We recommend the ACT ZCS201, obtainable from [www.act-solutions.com](http://www.act-solutions.com) – inform Technical Support if you intend to use any other type of interface so we can test for any compatibility issues.

### Ordering

The driver is included as standard in Niagara<sup>AX</sup> JACE licenses, and as it is an open driver there is no extra cost.